



AUTONOMOUS BOUGAINVILLE GOVERNMENT.

**REVENUE AND TAX
SUMMIT 27th - 29th
SEPTEMBER 2017**

**PRESENTER
RAPHAEL
NAGUAL**

***SECRETARY
DLPPEC***



AUTONOMOUS BOUGAINVILLE GOVERNMENT

No.	CONTENT	SLIDE	COMMENT
1	OVERVIEW OF DLPPEC	3	STRUCTURE & DIVISIONS
2	VISSION, MISSION AND VALUES.	4	CORPORATE PLAN
3	MANDATE, REVENUE GENERATING STREAMS AND RENT COLLECTION PROCESS.	5	DETAILED IN THE WRITTEN DOCUMENT
4	STATE LAND IN ARoB AND EXPECTED LAND RENT	6	SUMMARY CHART
5	WORK PLAN	7	ACTIVITIES OF LAND RENTAL COLLECTION
6	ACTIVITIES FOR INCREASE REVENUE	8	ACTIVITIES OF LAND RENTAL COLLECTION
7	RELATIONSHIP FLOW CHART	9	CORE PLAYERS
8	QUESTION TIME	10	END SLIDE



AUTONOMOUS BOUGAINVILLE GOVERNMENT.

DLPPEC – STRUCTURE AND FUNCTIONS

1

DLPPEC STRUCTURE – THREE DIVISIONS

2

DIRECTORS – THREE POSITIONS

3

STATUTORY BOARDS – TWO BOARDS

4

DRAW DOWN OF POWERS – LANDS & CEPA

5

LAND ACT 1996 – LAND RENTAL COLLECTION



AUTONOMOUS BOUGAINVILLE GOVERNMENT
DEPARTMENT OF LANDS PHYSICAL PLANNING ENVIRONMENT AND CONSERVATION
P.O BOX 322 BUKA BOUGAINVILLE.

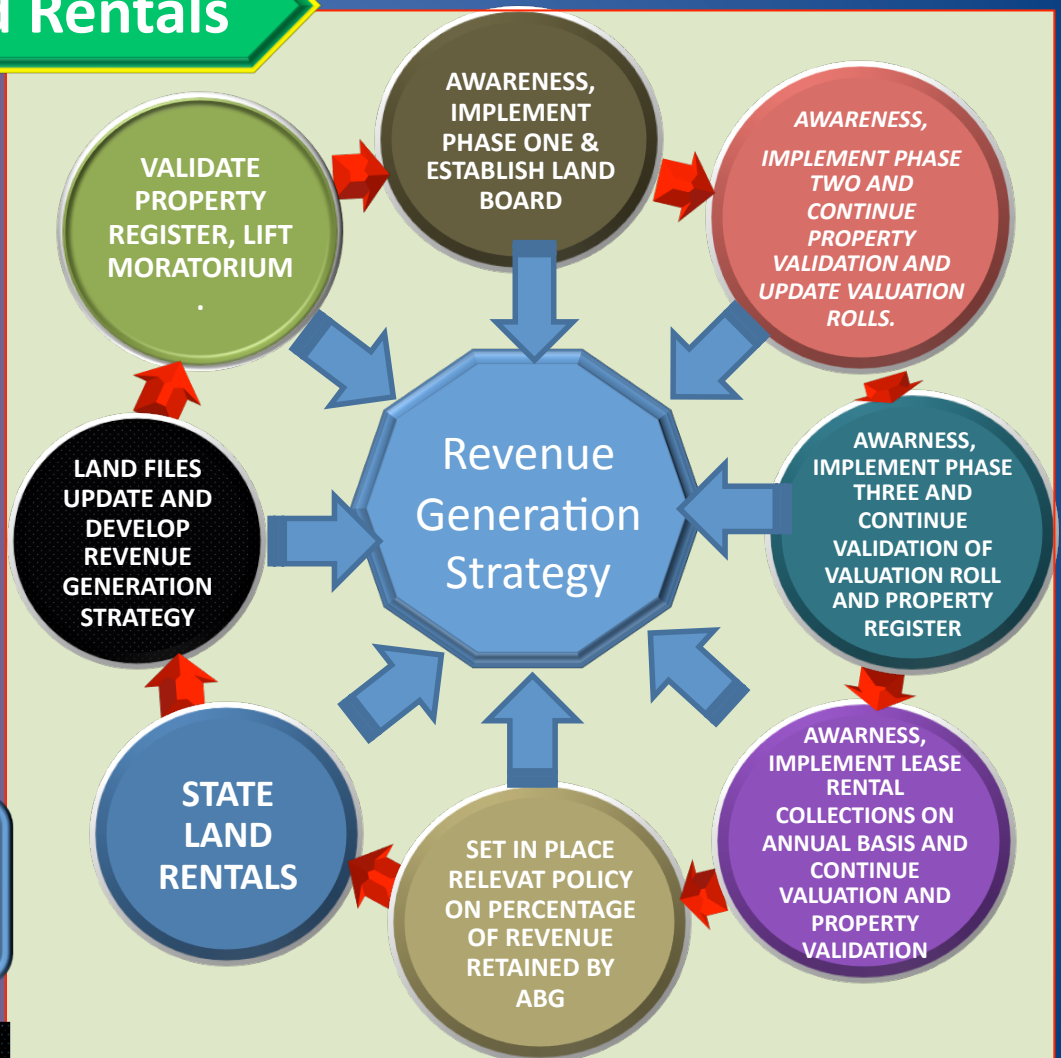
DLPPEC - VISION – MISSION & VALUES

- ❖ **VISION:** Land is utilised to improve the quality of life for all citizens of the Autonomous Region of Bougainville.
- ❖ **MISSION:** To promote the best use of land in Bougainville through environmentally friendly initiatives in the interest of all citizens, individually and collectively, by ensuring that an orderly process exists for land to be made available for sustainable economic, and social development and that land rights are guaranteed.
- ❖ **Values:** Human respect, customer services, Fairness and equity, Integrity and ethics, Accountability and transparency, Leadership, Innovation and adoptability.
- ❖ **STRATEGY:** Implement programs and projects in accordance to the Departments Corporate Plan 2017 - 2021, and Divisional work Plans 2017.

MANDATE

MANDATED REVENUE STREAMS

PROCESS & OUTCOMES

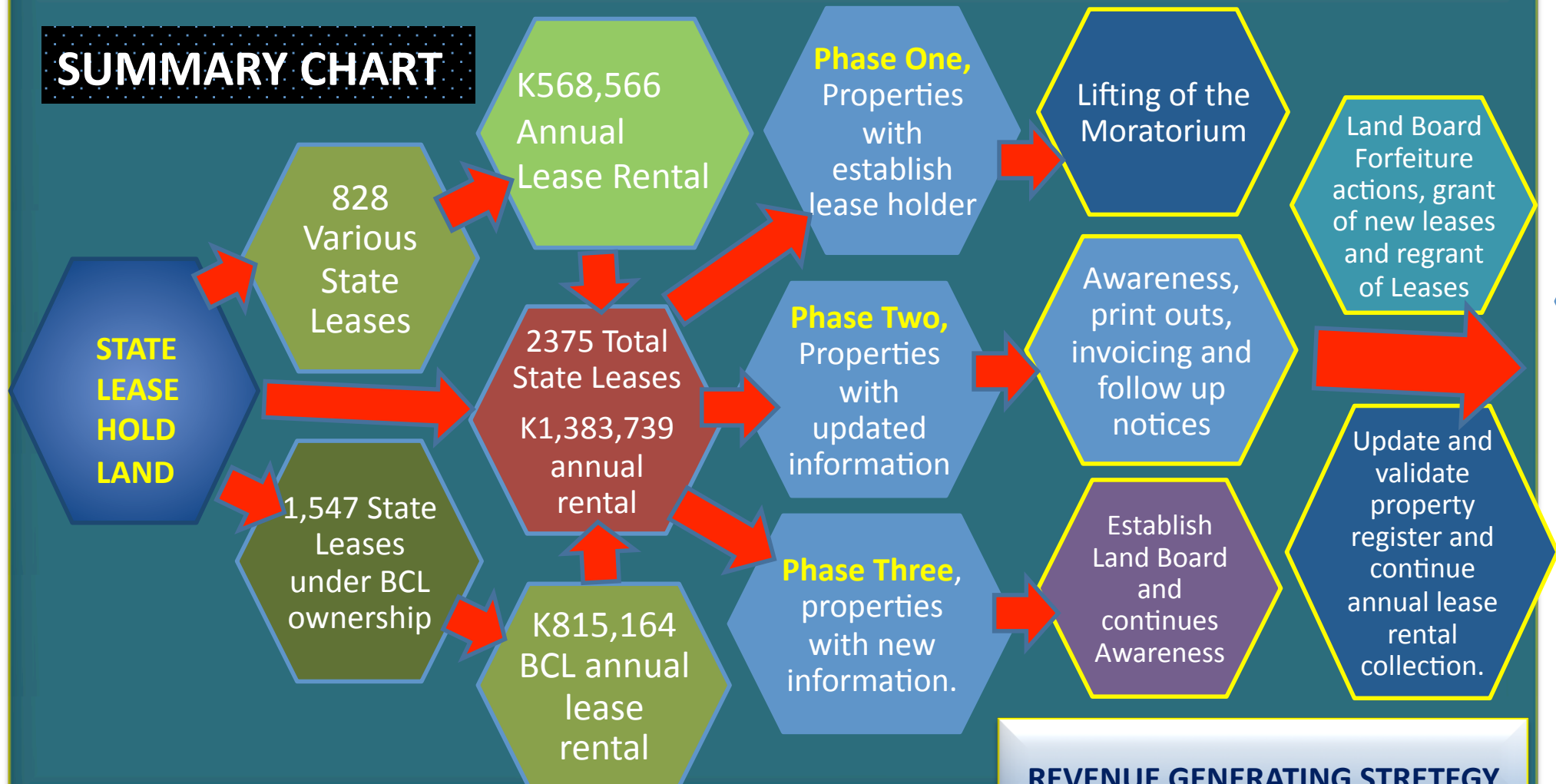


REVENUE GENERATING STREAMS ACTIVITY CHART.



AUTONOMOUS BOUGAINVILLE GOVERNMENT.
DEPARTMENT OF LANDS PHYSICAL PLANNING ENVIRONMENT AND CONSERVATION
P.O BOX 322 BUKA BOUGAINVILLE.

SUMMARY CHART





SCHEDULE OF ACTIVITIES AND DATES OF EACH ACTIVITY

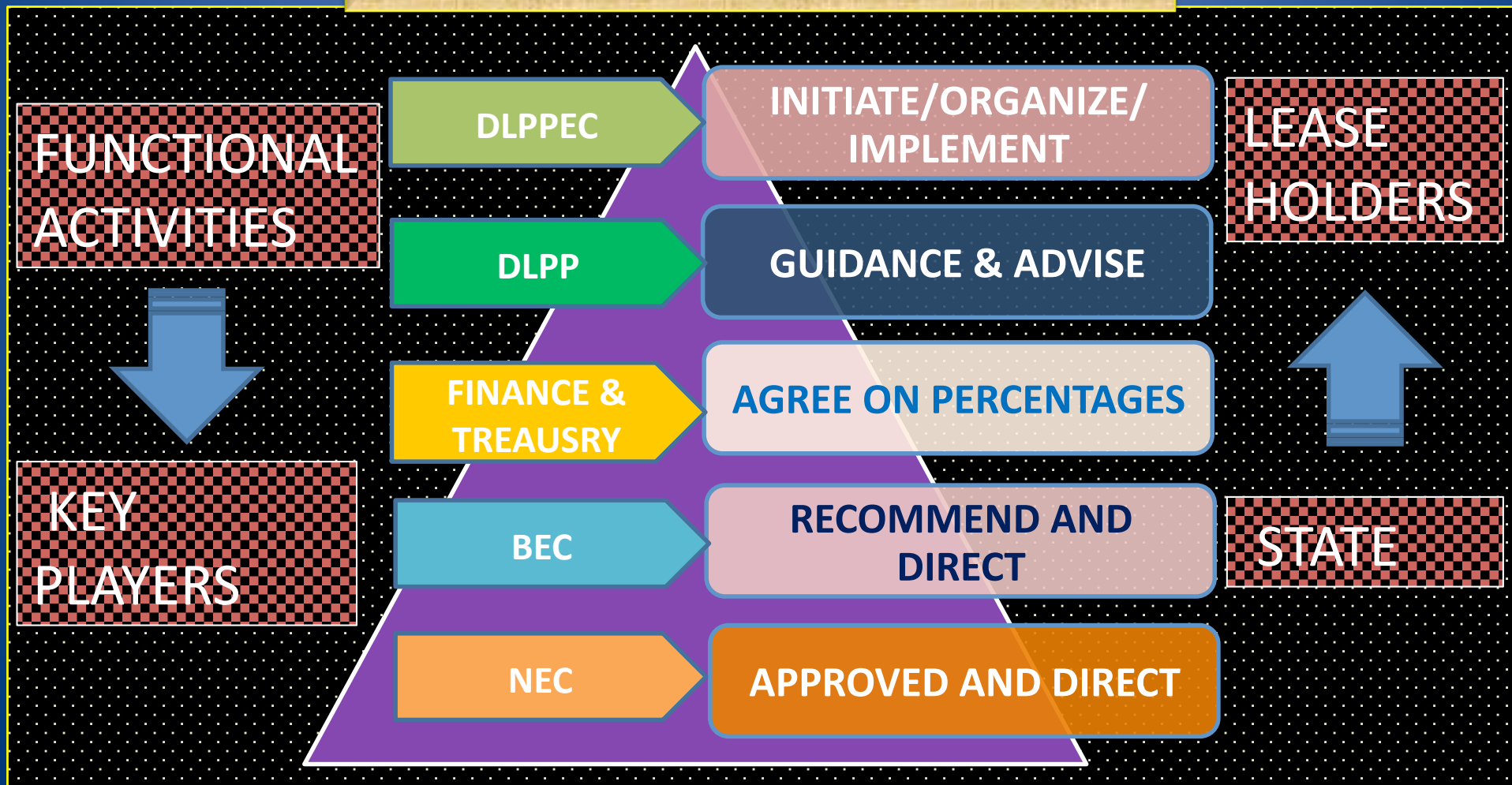
No.	ACTIVITY	BY WHOM	START DATE	REMARKS
1	Verify and update information in the Land Files.	Secretary and DLPPEC Directors and Staff.	Early September 2017	Work commenced early September and is ongoing.
2	Draft and complete Revenue generating strategy.	Secretary, Minister and DLPPEC Directors and Staff.	Early September 2017	Work in progress towards the Revenue and Tax Summit
3	Consultations with Key players	Secretary, Minister and Lands Advisor.	Mid September & On going.	Meetings held in Mid September and is ongoing.
4	Validate property register and update valuation rolls.	Secretary , DLPPEC team and Valuation staff.	Mid September & On going.	Work in progress.
5	Lift the moratorium through BEC & NEC	Secretary, Minister, Lands Advisor, BEC, National Minister and NEC.	Mid October 2017	Work in progress.
6	Establish the Bougainville Land Board.	Secretary, Minister, Lands Advisor, BEC, DLPP staff, Minister and NEC.	October 2017 & Ongoing.	Work will commence soon
7	Obtain Land Board Clearance for Forfeiture actions.	Secretary, Minister, Advisor and Forfeiture Team.	December 2017 & Ongoing.	Work will commence soon
8	Issue Forfeiture Notices	Forfeiture Team	Dec. 2017 & Ongoing.	Commencing soon.
9	Land Board Re-allocate Land	Secretary and Director Land Admin and Land Admin Team.	December 2017 & Ongoing.	Work will commence soon
10	Progress annual Land Rental collections	Secretary and Director Land Admin and Land Admin Team	December 2017 & Ongoing.	Progress through accepted process in three Phases.

No.	ACTIVITY	HOW	REMARKS
1	Validate property register and increase number of lease hold properties	2375 properties may increase when property register is validated and the Valuation rolls are updated.	Carry out physical inspection surveys of all state properties in all Towns and Districts of ARoB.
2	Establish through Policy, increase land rental per property annually.	BEC to recommend increase in annual land rentals to NEC.	Requires awareness and justification on land rental increases.
3	Establish policy on plantations.	Requires BEC recommendation and NEC decision.	Free hold, Lease hold Mortgage and sold plantations.
4	Developed Property tax.	Establish through policy, say 2% of unimproved valuation.	Key players: Town Authority & Community Government.
5	Statutory Board Fees Physical Planning Board and Land Board Fees.	Fees of PP Board applications, default fees etc. Land Board fees and	Minimum 4 PP Board meetings with K20,000 at K5,000 per Board meeting. Land Board fees K50,000 annually.



AUTONOMOUS BOUGAINVILLE GOVERNMENT
DEPARTMENT OF LANDS PHYSICAL PLANNING ENVIRONMENT AND CONSERVATION
P.O BOX 322 BUKA BOUGAINVILLE

RELATIONSHIP LINKAGES FRAMEWORK





AUTONOMOUS BOUGAINVILLE GOVERNMENT
DEPARTMENT OF LANDS PHYSICAL PLANNING ENVIRONMENT AND CONSERVATION
P.O BOX 322 BUKA BOUGAINVILLE.

QUESTION TIME